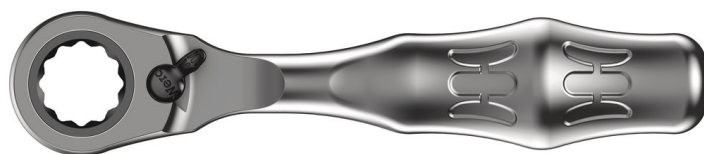


## 8005 Zyklop Mini 2 Ratchet, 107 mm

### Zyklop Mini 2



<b>EAN:</b>	4013288179616	<b>Size:</b>	110x25x25 mm
<b>Part number:</b>	05003660001	<b>Weight:</b>	102 g
<b>Article number:</b>	8005	<b>Country of origin:</b>	TW
		<b>Customs tariff number:</b>	82041200

- Direct attachment of special Zyklop sockets
- Small return angle of 6° for precise working
- Simple left/right switchover
- Ideal for confined working situations

Zyklop Mini 2 for the direct take-up of special Wera Zyklop sockets. Combines filigree design with incredible robustness. For particularly rapid screwdriving even in confined working spaces. The Zyklop Mini 2 is the preferred choice whenever fastening with a power tool or conventional hand tool is impossible due to a lack of space.

#### Web link

[https://products.wera.de/en/ratchets\\_and\\_accessories\\_zyklop\\_mini\\_zyklop\\_mini\\_2\\_8005.html](https://products.wera.de/en/ratchets_and_accessories_zyklop_mini_zyklop_mini_2_8005.html)

Wera - 8005  
05003660001 - 4013288179616

Wera Werkzeuge GmbH  
Korzter Straße 21-25  
D-42349 Wuppertal  
Tel: +49 (0)2 02 / 40 45-0  
E-Mail: [info@wera.de](mailto:info@wera.de)

Zyklop Mini 2

The Zyklop Mini Ratchets

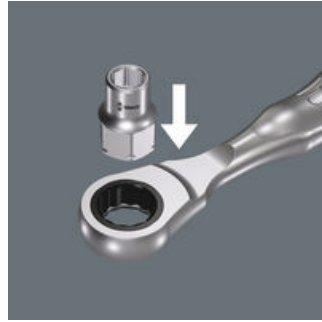
Zyklop Mini 2

The Zyklop Mini

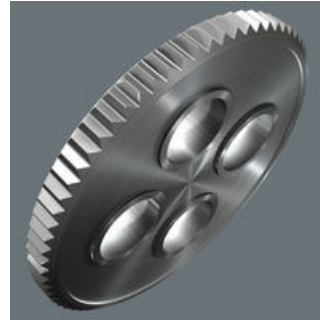
Simple direction change



For all difficult-to-access applications.



The Zyklop Mini 2 is suitable for the direct attachment of the special Wera Zyklop sockets 8790 FA. These sockets feature a very low height, ideal for confined working spaces.



The fine tooth mechanism, with its 60 teeth, allows a small return angle of only 6° - ideal for precision work.



Simple switching between left/right operations.

Further versions in this product family:



mm

05003660001

107

Web link

[https://products.wera.de/en/ratchets\\_and\\_accessories\\_zyklop\\_mini\\_zyklop\\_mini\\_2\\_8005.html](https://products.wera.de/en/ratchets_and_accessories_zyklop_mini_zyklop_mini_2_8005.html)

Wera - 8005

05003660001 - 4013288179616

Wera Werkzeuge GmbH

Korzter Straße 21-25

D-42349 Wuppertal

Tel: +49 (0)2 02 / 40 45-0

E-Mail: [info@wera.de](mailto:info@wera.de)